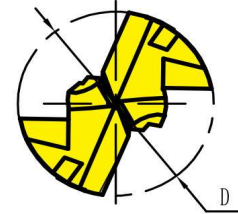
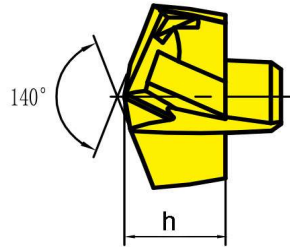


Self-Locked Changeable Carbide Head Drills -- QuickDrill

Standard Head



Head No.	Dia.(mm)	H (mm)	Holder No.
QD-080-S	8.0	5.4	QD080-089-12-D
QD-081-S	8.1		
QD-082-S	8.2		
QD-083-S	8.3		
QD-084-S	8.4		
QD-085-S	8.5		
QD-086-S	8.6		
QD-087-S	8.7		
QD-088-S	8.8		
QD-089-S	8.9		
QD-090-S	9.0	5.8	QD090-099-12-D
QD-091-S	9.1		
QD-092-S	9.2		
QD-093-S	9.3		
QD-094-S	9.4		
QD-095-S	9.5		
QD-096-S	9.6		
QD-097-S	9.7		
QD-098-S	9.8		
QD-099-S	9.9		
QD-100-S	10.0	5.8	QD100-109-16-D
QD-101-S	10.1		
QD-102-S	10.2		
QD-103-S	10.3		
QD-104-S	10.4		
QD-105-S	10.5		
QD-106-S	10.6		
QD-107-S	10.7		
QD-108-S	10.8		
QD-109-S	10.9		
QD-110-S	11.0	6.6	QD110-119-16-D
QD-111-S	11.1		
QD-112-S	11.2		
QD-113-S	11.3		
QD-114-S	11.4		
QD-115-S	11.5		
QD-116-S	11.6		
QD-117-S	11.7		
QD-118-S	11.8		
QD-119-S	11.9		

Head No.	Dia.(mm)	H (mm)	Holder No.
QD-170-S	17.0	9.9	QD170-179-20-D
QD-171-S	17.1		
QD-172-S	17.2		
QD-173-S	17.3		
QD-174-S	17.4		
QD-175-S	17.5		
QD-176-S	17.6		
QD-177-S	17.7		
QD-178-S	17.8		
QD-179-S	17.9		
QD-180-S	18.0	10.5	QD180-189-25-D
QD-181-S	18.1		
QD-182-S	18.2		
QD-183-S	18.3		
QD-184-S	18.4		
QD-185-S	18.5		
QD-186-S	18.6		
QD-187-S	18.7		
QD-188-S	18.8		
QD-189-S	18.9		
QD-190-S	19.0	11	QD190-199-25-D
QD-191-S	19.1		
QD-192-S	19.2		
QD-193-S	19.3		
QD-194-S	19.4		
QD-195-S	19.5		
QD-196-S	19.6		
QD-197-S	19.7		
QD-198-S	19.8		
QD-199-S	19.9		
QD-200-S	20.0	11.6	QD200-209-25-D
QD-201-S	20.1		
QD-202-S	20.2		
QD-203-S	20.3		
QD-204-S	20.4		
QD-205-S	20.5		
QD-206-S	20.6		
QD-207-S	20.7		
QD-208-S	20.8		
QD-209-S	20.9		

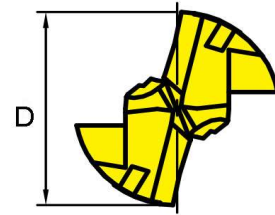
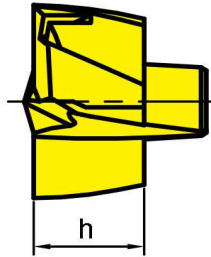
Self-Locked Changeable Carbide Head Drills -- QuickDrill

Standard Head

Head No.	Dia.(mm)	H (mm)	Holder No.
QD-120-S	12.0	7	QD120-129-16-D
QD-121-S	12.1		
QD-122-S	12.2		
QD-123-S	12.3		
QD-124-S	12.4		
QD-125-S	12.5		
QD-126-S	12.6		
QD-127-S	12.7		
QD-128-S	12.8		
QD-129-S	12.9		
QD-130-S	13.0	7.6	QD130-139-16-D
QD-131-S	13.1		
QD-132-S	13.2		
QD-133-S	13.3		
QD-134-S	13.4		
QD-135-S	13.5		
QD-136-S	13.6		
QD-137-S	13.7		
QD-138-S	13.8		
QD-139-S	13.9		
QD-140-S	14.0	8.1	QD140-149-16-D
QD-141-S	14.1		
QD-142-S	14.2		
QD-143-S	14.3		
QD-144-S	14.4		
QD-145-S	14.5		
QD-146-S	14.6		
QD-147-S	14.7		
QD-148-S	14.8		
QD-149-S	14.9		
QD-150-S	15.0	8.7	QD150-159-20-D
QD-151-S	15.1		
QD-152-S	15.2		
QD-153-S	15.3		
QD-154-S	15.4		
QD-155-S	15.5		
QD-156-S	15.6		
QD-157-S	15.7		
QD-158-S	15.8		
QD-159-S	15.9		
QD-160-S	16.0	9.3	QD160-169-20-D
QD-161-S	16.1		
QD-162-S	16.2		
QD-163-S	16.3		
QD-164-S	16.4		
QD-165-S	16.5		
QD-166-S	16.6		
QD-167-S	16.7		
QD-168-S	16.8		
QD-169-S	16.9		

Head No.	Dia.(mm)	H (mm)	Holder No.
QD-210-S	21.0	12.1	QD210-219-25-D
QD-211-S	21.1		
QD-212-S	21.2		
QD-213-S	21.3		
QD-214-S	21.4		
QD-215-S	21.5		
QD-216-S	21.6		
QD-217-S	21.7		
QD-218-S	21.8		
QD-219-S	21.9		
QD-220-S	22.0	12.7	QD220-229-25-D
QD-221-S	22.1		
QD-222-S	22.2		
QD-223-S	22.3		
QD-224-S	22.4		
QD-225-S	22.5		
QD-226-S	22.6		
QD-227-S	22.7		
QD-228-S	22.8		
QD-229-S	22.9		
QD-230-S	23.0	13.3	QD230-239-32-D
QD-231-S	23.1		
QD-232-S	23.2		
QD-233-S	23.3		
QD-234-S	23.4		
QD-235-S	23.5		
QD-236-S	23.6		
QD-237-S	23.7		
QD-238-S	23.8		
QD-239-S	23.9		
QD-240-S	24.0	13.9	QD240-249-32-D
QD-241-S	24.1		
QD-242-S	24.2		
QD-243-S	24.3		
QD-244-S	24.4		
QD-245-S	24.5		
QD-246-S	24.6		
QD-247-S	24.7		
QD-248-S	24.8		
QD-249-S	24.9		
QD-250-S	25.0	14.5	QD250-260-32-D
QD-251-S	25.1		
QD-252-S	25.2		
QD-253-S	25.3		
QD-254-S	25.4		
QD-255-S	25.5		
QD-256-S	25.6		
QD-257-S	25.7		
QD-258-S	25.8		
QD-259-S	25.9		

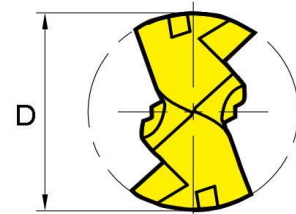
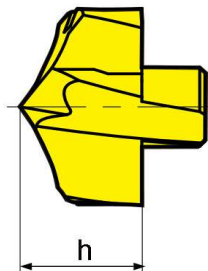
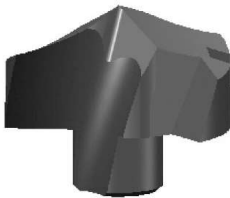
Flat Head



Head No.	Dia.(mm)	H (mm)	Holder No.
QD-080-F	8.0	4	QD080-089-12-D
QD-085-F	8.5		
QD-090-F	9.0	4.2	QD90-099-12-D
QD-095-F	9.5		
QD-100-F	10.0	4.4	QD100-109-16-D
QD-105-F	10.5		
QD-110-F	11.0	4.5	QD110-119-16-D
QD-115-F	11.5		
QD-120-F	12.0	4.8	QD120-129-16-D
QD-125-F	12.5		
QD-130-F	13.0	5.1	QD130-139-16-D
QD-135-F	13.5		
QD-140-F	14.0	5.5	QD140-149-16-D
QD-145-F	14.5		
QD-150-F	15.0	5.9	QD150-159-20-D
QD-155-F	15.5		
QD-160-F	16.0	6.3	QD160-169-20-D
QD-165-F	16.5		

Head No.	Dia.(mm)	H (mm)	Holder No.
QD-170-F	17.0	6.6	QD170-179-20-D
QD-175-F	17.5		
QD-180-F	18.0	6.9	QD180-189-25-D
QD-185-F	18.5		
QD-190-F	19.0	7.2	QD190-199-25-D
QD-195-F	19.5		
QD-200-F	20.0	8.2	QD200-209-25-D
QD-205-F	20.5		
QD-210-F	21.0	8.6	QD210-219-25-D
QD-215-F	21.5		
QD-220-F	22.0	8.9	QD220-229-25-D
QD-225-F	22.5		
QD-230-F	23.0	9.3	QD230-239-32-D
QD-235-F	23.5		
QD-240-F	24.0	9.7	QD240-249-32-D
QD-245-F	24.5		
QD-250-F	25.0	10.1	QD250-260-32-D
QD-255-F	25.5		
QD-260-F	26.0		

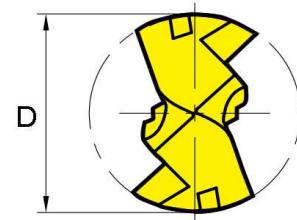
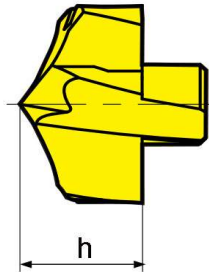
Centering Head



Head No.	Dia.(mm)	H (mm)	Holder No.
QD-080-C	8.0	5.4	QD080-089-12-D
QD-085-C	8.5		
QD-090-C	9.0	5.8	QD90-099-12-D
QD-095-C	9.5		
QD-100-C	10.0	6.2	QD100-109-16-D
QD-105-C	10.5		
QD-110-C	11.0	6.6	QD110-119-16-D
QD-115-C	11.5		
QD-120-C	12.0	7	QD120-129-16-D
QD-125-C	12.5		
QD-130-C	13.0	7.6	QD130-139-16-D
QD-135-C	13.5		
QD-140-C	14.0	8.2	QD140-149-16-D
QD-145-C	14.5		

Head No.	Dia.(mm)	H (mm)	Holder No.
QD-170-C	17.0	9.9	QD170-179-20-D
QD-175-C	17.5		
QD-180-C	18.0	10.5	QD180-189-25-D
QD-185-C	18.5		
QD-190-C	19.0	11	QD190-199-25-D
QD-195-C	19.5		
QD-200-C	20.0	11.6	QD200-209-25-D
QD-205-C	20.5		
QD-210-C	21.0	12.2	QD210-219-25-D
QD-215-C	21.5		
QD-220-C	22.0	12.8	QD220-229-25-D
QD-225-C	22.5		
QD-230-C	23.0	13.3	QD230-239-32-D
QD-235-C	23.5		

Centering Head



Head No.	Dia.(mm)	H (mm)	Holder No.
QD-150-C	15.0	8.7	QD150-159-20-D
QD-155-C	15.5		
QD-160-C	16.0	9.3	QD160-169-20-D
QD-165-C	16.5		

Head No.	Dia.(mm)	H (mm)	Holder No.
QD-240-C	24.0	13.9	QD240-249-32-D
QD-245-C	24.5		
QD-250-C	25.0	14.5	QD250-260-32-D
QD-255-C	25.5		
QD-260-C	26.0		